

I-DRAIN® PRO LINEAR 54 & 72

> The shower solution with easy installation

The I-DRAIN® PRO Linear is the design component in your bathroom, with optimum ease of maintenance. An ingenious and innovative solution that professionally and elegantly regulates the water drainage of every shower area. With a built-in height of 54 mm (excluding the floor finish), the I-DRAIN® Linear drains have the lowest possible built-in height.

DDS (Double Drain System)

Type outlet: horizontal

Waterproof: shower drain equipped with a pre-glued waterproofing membrane, 25 years waterproof guarantee!

Siphon: completely removable and with separately removable strainer for easy cleaning

Grating can be connected with **straight** and **90°** connector pieces

Grating adjustable: yes

Included in box: I-Buddy installation block and tile block

10 years warranty

Certified:

Tested by SP Sweden: 25 years watertight patented glueing of the membrane with the drain. EN1253 - ISO 9001 - LGA approved. (for Linear 72)



Available in 7 sizes:

- 600 mm
- 700 mm
- 800 mm
- 900 mm
- 1000 mm
- 1100 mm
- 1200 mm

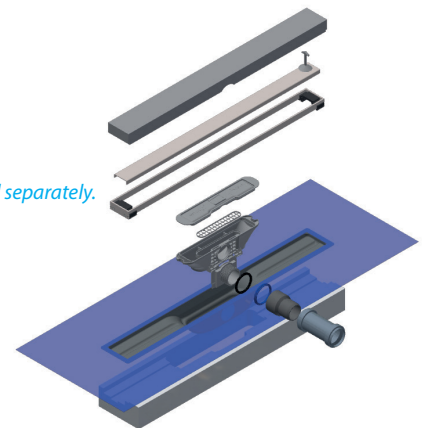
> Characteristics

	54 mm	72 mm
Mounting height	54 mm	72 mm
Water seal height	30 mm	50 mm
Connection (∅)	40 mm	50 mm
Flow capacity	27,5 l/min.	33,5 l/min.

> Material

Drain	Deepdrawn stainless steel
Grating	To be purchased separately*
Inner screw part	Polypropylene
Outer screw part	ABS PC
Siphon	Polypropylene
Grating supports	ABS
Sealing rings	Silicone/EPDM

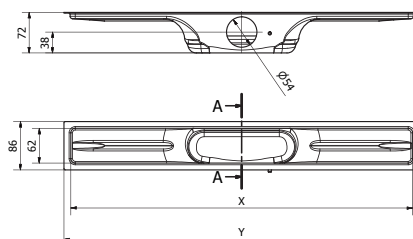
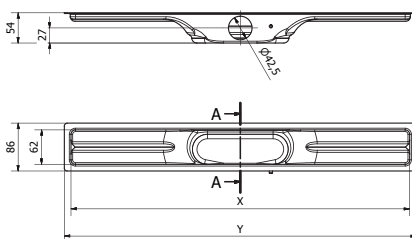
*Grating to be purchased separately.



> Technical drawing

54 mm

72 mm



X	Y
609	633
709	733
809	833
909	933
1009	1033
1109	1133
1209	1233

x = view size
y = mounting size
(waterproofing membrane 330 mm excl.)